

Mouse Anti-human CoA Clone: 567A19-12G9 Monoclonal Antibody

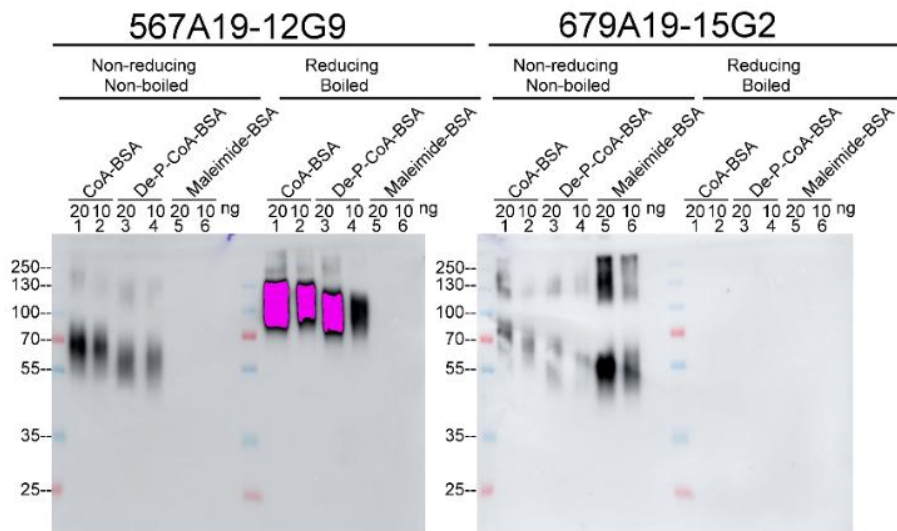
Catalog Number:	PT-mAb-CoA
Quantity:	100ug
Concentration:	1mg/mL
Specificity:	Human
Immunogen:	CoA-conjugated bovine serum albumin
Isotype:	IgG
Supplies As:	Protein A purified; 50% Glycerol
Storage:	-20 °C

Applications and Suggested Dilutions*:

Western Blot: 1-5 µg/ml;

Immunohistochemistry: 1-5 µg/ml

*Specific dilutions and blocking conditions should be determined by the investigator.



The CoA mAb exhibits excellent detection sensitivity and is able to detect less than 10 ng CoA-BSA in immunoblot analysis (lanes 1 and 2).