

## **Mouse Anti-human complements 4b Binding Protein (C4BP), clone #: A04-7A2 Monoclonal Antibody**

<b>Catalog Number:</b>	PT-mAb-A04-7A2
<b>Quantity:</b>	100ug
<b>Concentration:</b>	
<b>Specificity:</b>	Human
<b>Immunogen:</b>	Human Complement 4b Binding Protein
<b>Isotype:</b>	IgG
<b>Supplies As:</b>	Protein A purified; lyophilized
<b>Storage:</b>	-20 °C

### **Applications and Suggested Dilutions\*:**

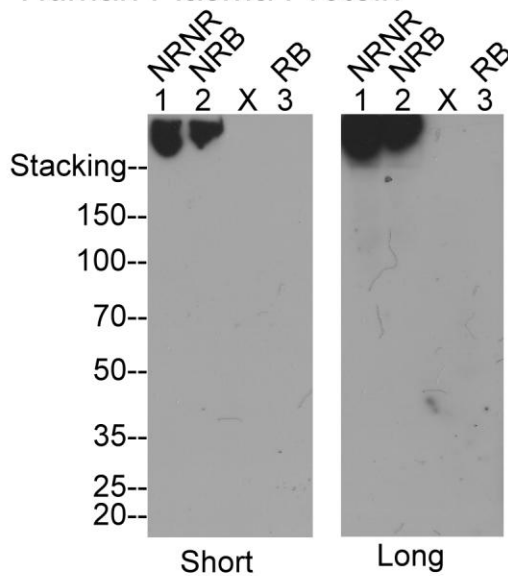
Western Blot: 2 µg/ml;  
Immunohistochemistry: 2 µg/ml

\*Specific dilutions and blocking conditions should be determined by the investigator.

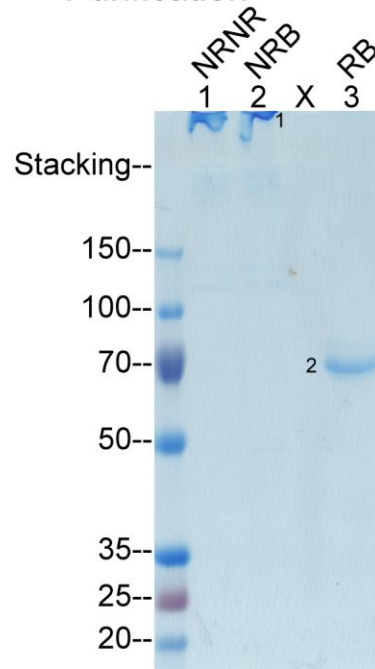
### **Reference:**

## Complement 4b binding protein (C4BP) The mAb A04-7A2

### A. WB, Partially Purified Human Plasma Protein



### B. Immunoaffinity Purification



### C. Target verification by MS/MS

Protein Band Sliced	Protein Verified By MS/MS	Relative Abundance	UniProt Link
1	C4BP alpha chain	30.7%	<a href="#">P04003</a>
	C4BP beta chain	2.5%	<a href="#">P20851</a>
	Vitamin K -dependent protein S	0.6%	<a href="#">P07225</a>
2	C4BP alpha chain	75.2%	<a href="#">P04003</a>
	Vitamin K-dependent protein S	14.4%	<a href="#">P07225</a>