

Mouse Anti-human Haptoglobin, clone #: A11-4A10 Monoclonal Antibody

Catalog Number:	PT-mAb-A11-4A10
Quantity:	100ug
Concentration:	1mg/mL
Specificity:	Human
Immunogen:	Human Haptoglobin
Isotype:	IgG
Supplies As:	Protein A purified; 50% Glycerol
Storage:	-20 °C

Applications and Suggested Dilutions*:

Western Blot: 2 µg/ml;

Immunohistochemistry: 2 µg/ml

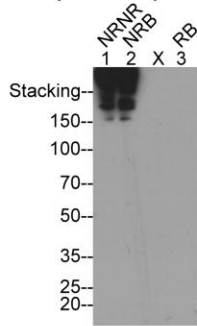
*Specific dilutions and blocking conditions should be determined by the investigator.

Reference:

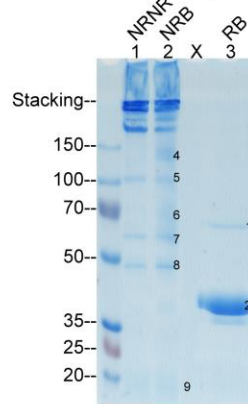
Haptoglobin

The mAb A11-13H7

A. WB, partially purified plasma proteins



B. Immunoaffinity Purification

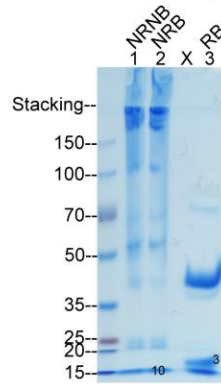


C. Target Verification by MS/MS

Protein Band Sliced	Protein Verified By MS/MS	Relative Abundance	UniProt Link
1	Albumin	73.7%	P02768
2	Haptoglobin	98.4%	P00738
3	Haptoglobin	56.7%	P00738
	Hemoglobin β	34.3%	P68871
4	Hemoglobin α	9%	P69905
	Haptoglobin	84%	P00738
	Hemoglobin β	5.1%	P68871
5	Hemoglobin α	10.1%	P69905
	Haptoglobin	0%	P00738
6	Haptoglobin	0%	P00738
7	Haptoglobin	0%	P00738
8	Haptoglobin	0%	P00738
9	Hemoglobin β	82.8%	P68871
	Hemoglobin α	16.8%	P69905
10	Hemoglobin β	68.1%	P68871
	Hemoglobin α	31%	P69905

The mAb A11-4A10

D. WB, partially purified plasma proteins



E. Immunoaffinity Purification