

## IGF1 (Insulin-Like Growth Factor-I)

**Cat.# PT-CF-hIGF1**

**500 ug**

**1 mg**

**5 mg**

**Description:** IGF1 is a hormone similar in molecular structure to insulin. It promotes cell growth and proliferation and plays a key role in growth and development, particularly during childhood, and has important functions in anabolic processes in adults. This product is expressed in E. coli and corresponds to the mature region of the sequence, spanning from Gly49 to Ala118, which is also the functional region.

**Accession # P05019**

### Sequence:

```
GPETLCGAEL VDALQFVCGD  
RGFYFNKPTG YGSSRRAPQ  
TGIVDECCFR SCDLRRLEMY  
CAPLKPAKSA
```

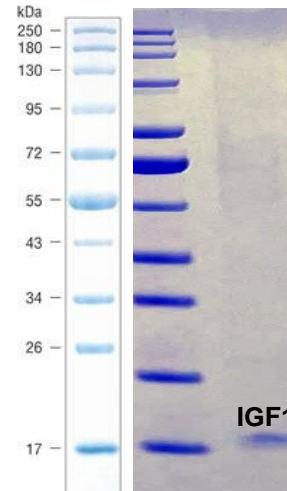
**Storage conditions:** Long term storage at – 20 C. Avoid repeated freeze-thaw cycles.

**Purity:** >90% by SDS-PAGE gel

**Concentration:** 0.1ug/uL

**Formulation:** 20 mM HEPES buffer pH 7.0, 50%Glycerol

**Product Source:** Recombinant human IGF1 expressed in E. coli.



**Figure 1. Quality control assay. IGF1 on SDS PAGE gel in reduced condition.**

Lane 1. Marker

Lane 2. Human IGF1

**Reference:** Laron Z. Insulin-like growth factor 1 (IGF-1): a growth hormone. Mol Pathol. 2001 Oct;54(5):311-6.