

## **Mouse Anti-human IgA1, clone #: A04-1H4 Monoclonal Antibody**

<b>Catalog Number:</b>	PT-mAb-A04-1H4
<b>Quantity:</b>	100ug
<b>Concentration:</b>	
<b>Specificity:</b>	Human
<b>Immunogen:</b>	Human IgA1
<b>Isotype:</b>	IgG
<b>Supplies As:</b>	Protein A purified; lyophilized
<b>Storage:</b>	-20 °C

### **Applications and Suggested Dilutions\*:**

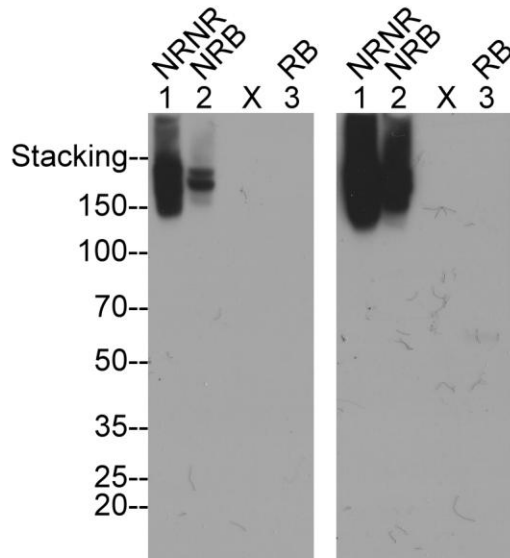
Western Blot: 2 µg/ml;  
Immunohistochemistry: 2 µg/ml

\*Specific dilutions and blocking conditions should be determined by the investigator.

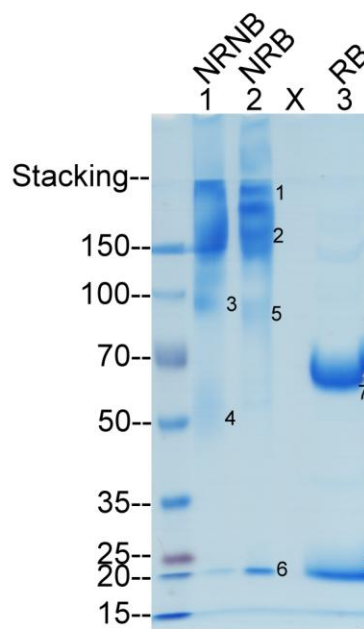
### **Reference:**

## Human IgA1, mAb A04-1H4

### A. WB, Partially Purified Human Plasma Protein



### B. Immunoaffinity Purification



### C. Target Verification by MS/MS

Protein Band Sliced	Protein Verified By MS/MS	Relative Abundance	UniProt Link
1	IGHA1	39.4%	<a href="#">P01876</a>
	IGK	22.7%	<a href="#">Q6PIL8</a>
	IGL	14.2%	<a href="#">Q8N355</a>
	IGL	9.4%	<a href="#">Q6NS95</a>
2	IGHA1	40.5%	<a href="#">P01876</a>
	IGK	27.6%	<a href="#">Q6PJF2</a>
	IGL	12.1%	<a href="#">Q8N355</a>
	IGL	8.7%	<a href="#">Q6NS95</a>
3	IGHA1	53.9%	<a href="#">P01876</a>
	IGK	22.3%	<a href="#">Q6PJF2</a>
	IGL	4.5%	<a href="#">Q8N355</a>
4	IgG L chain	43%	<a href="#">S6BAR0</a>
	IGL	29.2%	<a href="#">Q6NS95</a>
5	IGHA1	42.3%	<a href="#">P01876</a>
	IGK	23.4%	<a href="#">Q6P5S8</a>
	IGL	11.4%	<a href="#">Q8N355</a>
	IGL	13.6%	<a href="#">Q6NS95</a>
6	IgK	62.9%	<a href="#">Q6P5S8</a>
	IgG L chain	23.8%	<a href="#">S6BAR0</a>
	MS-D1 light chain variable	11.2%	<a href="#">A0A0X9TD47</a>
7	IgHA1	63.4%	<a href="#">P01876</a>
8	IGK	56.8%	<a href="#">Q6PIL8</a>
	IgG light chain	37.1%	<a href="#">S6BAR0</a>
	IgJ	5%	<a href="#">P01591</a>