

Mouse Anti-human TMPRSS2, clone: AL20 Monoclonal Antibody

Catalog Number:	PT-mAb-AL20
Quantity:	100ug
Concentration:	1mg/mL
Specificity:	Human
Immunogen:	Recombinant Human TMPRSS2
Isotype:	IgG
Supplies As:	Protein A purified; 50% Glycerol
Storage:	-20 °C

Applications and Suggested Dilutions*:

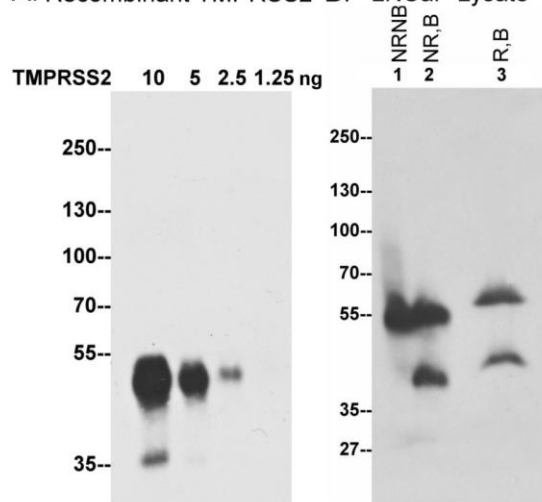
Western Blot: 1-5 µg/ml;
Immunohistochemistry: 1-5 µg/ml

*Specific dilutions and blocking conditions should be determined by the investigator.

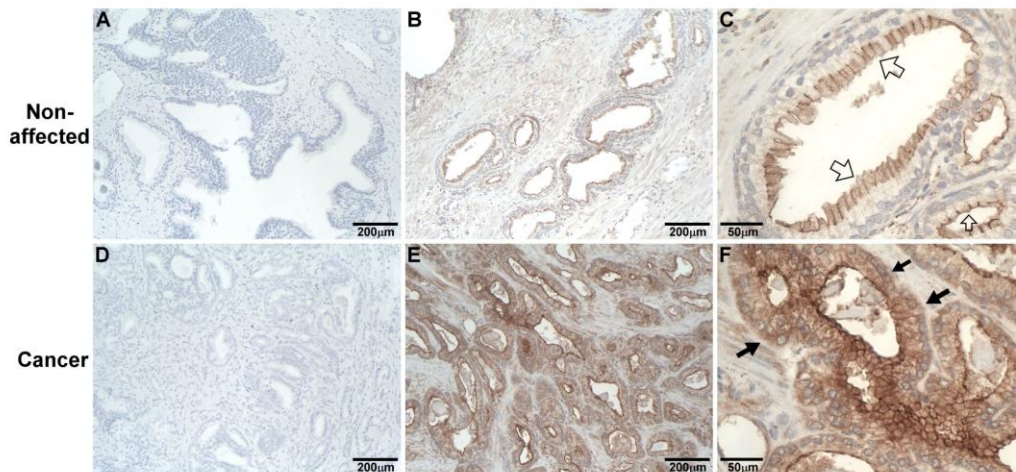
Reference:

Chen YW, Lee MS, Lucht A, Chou FP, Huang W, Havighurst TC, Kim K, Wang JK, Antalis T, Johnson MD and Lin CY. TMPRSS2, a Serine Protease Expressed in the Prostate on the Apical Surface of Luminal Epithelial Cells and Released into Semen in Prostatomes, Is Misregulated in Prostate Cancer Cells. *Am J Pathol* 176: 2986-2996, 2010.

A. Recombinant TMPRSS2 B. LNCaP Lysate



C. IHC staining: Prostate Tumor



The AL20 mAb can detect recombinant TMPRSS2 as low as 2.5 ng (A) and the endogenous TMPRSS2 in LNCaP cells under non-reducing/non-boiled (lane 1), non-reducing/boiled (lane 2), and reducing/boiled (lane 3) conditions (B). The **non-reducing/non-boiled condition** is the best for detection sensitivity. C. TMPRSS2 was detected on the apical plasma membrane of prostate epithelial cells (Panel C) and on the cell surface of prostate cancer cells by IHC (Panel F).